



November 1, 2001

data SOLUTIONS journal



Search for International Maps & Datasets



A Publication of LAND INFO International, LLC - Visit Us Online at www.LANDINFO.com

GEOdata News

New Satellite Photos of USA, Germany, Brazil, and Many More

LAND INFO International now offers 0.95-meter, 1.56-meter, and 2-meter imagery from Russian satellites. The coverage includes recent images of major cities in the United States, Mexico, Pakistan, India, Italy, Egypt, Czech Republic, Chile, Greece, Japan, and other countries.

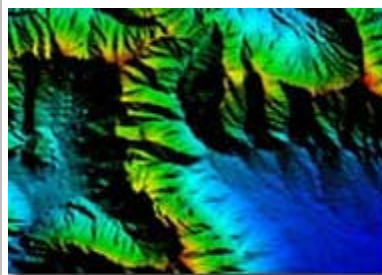
The data is captured through Russia's DK-1, DK-2, and KVR-1000 satellites. Data samples are available at LANDINFO.com. Data capture is ongoing for all satellites. The current coverage includes archived panchromatic photos from 1992 to 2001. Prices start as low as \$22 per square kilometer.

<p>2-meter Resolution: <i>\$22/sq km</i></p> <p>1.56-meter Resolution: <i>\$25/sq km</i></p> <p>0.95-meter Resolution: <i>\$35/sq km</i></p> <p><i>Click here to view samples & archive listing</i></p>

LAND INFO offers special custom tasking for areas and capture dates not yet archived. Colorization services are also available for all imagery resolutions. [\(more info...\)](#)

GEOdata Spotlight

MIDDLE EAST MAPS, IMAGERY, & SERVICES



3D DEMs Now Delivered via Firewire Drive, FTP, or CD

Long before the current military activities in the Middle East, the region surrounding the Arabian Peninsula was rapidly emerging as a hotbed for geospatial applications. International oil exploration & distribution, wireless network development, environmental analysis, and accelerating infrastructure planning, created a higher demand for geospatial data modeling and analysis. Demand for geodata of Saudi Arabia, United Arab Emirates, Kuwait, and others, has grown from both domestic and foreign users. LAND INFO International, a provider of geospatial information across the world, has developed a variety of special datasets to fulfill these demands.

Today, LAND INFO offers [digital elevation models \(DEM\)](#), [satellite imagery](#), [topographic maps](#), and [feature extraction layers](#) (i.e. roads, building footprints) for Saudi Arabia, [Afghanistan](#), Kuwait, Iraq, Iran, Pakistan, United Arab Emirates, and other regions. [Satellite imagery](#) is available for many regional cities in 0.95-meter and 2-meter resolution. [DEMs](#), created from source topographic maps, are available in 3 arc-second and 30-meter grid postings. LAND INFO offers [topographic maps](#) in 1:50,000, 1:100,000, and 1:200,000 scales for much of the region. [\(more info...\)](#)

<p><i>One Drive = Entire Country of Afghanistan 1:50,000 scale topographic maps</i></p>	<p>Faster Delivery of Country Datasets on Plug & Play FireWire Drive</p> <ul style="list-style-type: none"> • 80 gb external hard drive shipped with order (Equivalent to 130+ CD's)
	<ul style="list-style-type: none"> • Uploading time 30 times faster than USB • 48-hour delivery available for many countries
	<p>Contact LAND INFO today for complete details.</p>

Which of the following services would you like to see LAND INFO provide? (check all that apply)

- Feature extraction from imagery DEM's from imagery

data solutions journal POLL

- Field data collection services GIS applications for PDA's
 Color scanning services Other (describe below)

Please provide any additional comments about products and services you would like to see LAND INFO add:

Since its beginning, LAND INFO International has aggressively expanded its services to maintain pace with our clients' needs. During the past year, LAND INFO has added Quick DOQQ Aerial Photos, Russian satellite imagery, feature extraction services, and many new DEM and topo map datasets. Now, we are looking at several new service opportunities for 2002 and beyond.

Contact Information (optional):

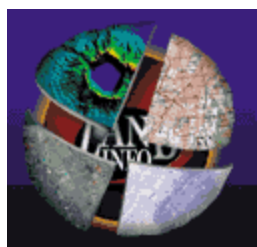
Name:

Phone:

Email:

SUBMIT POLL RESPONSE

Please help us determine which new services LAND INFO will provide in the future. Simply complete the short survey to the right. Thanks for helping LAND INFO better serve your geospatial needs.



LAND INFO International, LLC

LAND INFO International provides digital geospatial information of the world, including satellite imagery, 3D models, and topographic maps. LAND INFO provides clients with the world's largest database of [digital topographic and geospatial services & products](#)...so clients can spend time analyzing the data, not gathering it. The company markets to civil engineers, government planners, project managers, and other international professionals for a variety of GIS, remote-sensing and land-use applications. Please visit the website www.LANDINFO.com to learn more about these products and services.

- **Aerial & Satellite Imagery**
- **Feature Extraction Services**
- **3D Terrain Maps**
- **Geospatial Services**

**Topographic Maps
125 Countries**

LAND INFO offers [digital topographic maps](#) for the USA, Mexico, Germany, Peru, Chile, Indonesia, Azerbaijan, and many more. Maps are scanned at 400 dpi and fully geo-referenced. [Visit LANDINFO.com](#) for complete details.

- [View Coverage](#)
- [View Index Maps](#)
- [Download Samples](#)

[Click Here to Unsubscribe to the Data Solutions Journal](#)

[Contact LAND INFO](#) today at 1-800-949-5080 (+1 303-369-6800) to learn more about our complete geospatial solutions.

[Satellite Imagery](#) - [Aerial Photography](#) - [DEMs](#) - [Topo Maps](#) - [Feature Extraction Layers](#)

Send feedback about this DSJ issue to Steve Ebner at sebner@LANDINFO.com.

Missed a DSJ issue? View past issues at <http://www.LANDINFO.com/dsjarchive.htm>

Copyright © 2001 LAND INFO International, LLC. All rights reserved.

